

iD R600



The smartest and brightest single-chip DLP projector

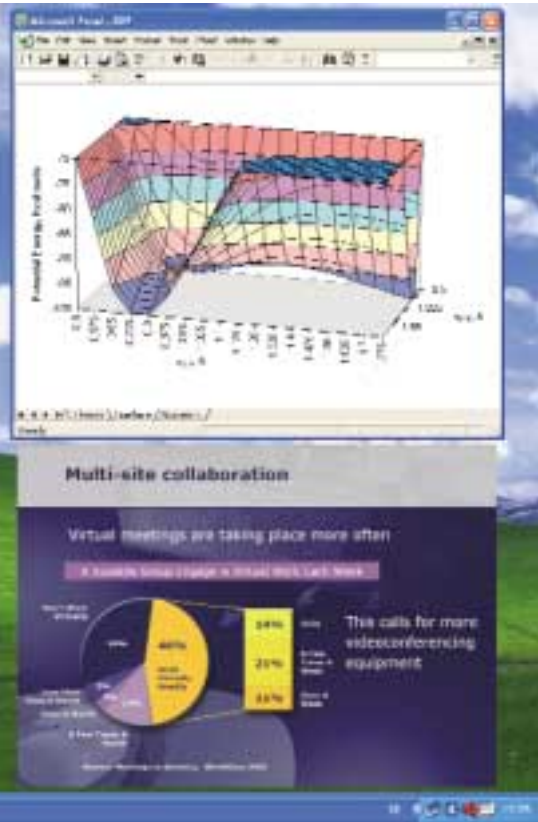


The iD (Pro) R600 visualization solution is the right fit for extensive displaying applications offering advanced picture-in-picture, SXGA+ and networking functionality.

BARCO

Visibly yours

Based on a robust technology



Intensive use

- Robust single chip DLP™ technology
- Dual lamp redundancy

Lower operation and maintenance costs

- Less consumables thanks to DLP technology
- Network centric operation
- Remote control & diagnostics

Increased visualization efficiency

- SXGA+ resolution for superb detail
- Picture-in-Picture
- High brightness

High brightness and high resolution, combined with the robustness of a DLP solution, turn the iD R600 into the perfect solution for intensive use applications in bright environments such as hotels, museums, corporate imaging applications, boardrooms, conference centers, casinos, ...



Barco iD (Pro) R600

The ultimate presentation machine



In the lobby, companies, museums and conference centers create a strong company identity



Catch your audiences attention with overwhelming flexibility

The advanced picture-in-picture functionality for displaying multiple sources, both video and data, ensures the flexibility to show multiple windows next to one another.



Make a lasting impression

This 6,000 ANSI lumen DLP projector generates a bright, true color, high-resolution video image on a 4:3 canvas, with a contrast ratio of more than 1500:1, resulting in the projection of high quality video and data images.

Connect to virtually anything

The iD R600 can show up to 2 data and 1 video sources at the same time, without optional input boards. With iD Pro R600, you can connect to your network sources and stream video from the network or connect over LAN to your PC.

DLP by the technology leader

Delivers bright pictures in normal light conditions

Seamless source switching

Switch sources on-the-fly without distracting on-screen warning messages or irritating intervals. Go from a video to a data image in a snap, or use the special effects.



The power of network connectivity



Windows™ XP platform: the familiar user interface*

Via mouse and keyboard and the familiar Windows XP user interface, the presenter can easily connect to the network to retrieve files, stream video or share information with other users. The same mouse and keyboard are used to operate the system and to move your windows, or to connect to your sources.

The graphical user interface enables users to freely position and scale multiple window frames, change the aspect ratios, the brightness, color, and contrast levels, simply using the mouse and keyboard, eliminating the need of the traditional remote control.

(* available on iD Pro R600

Surprise meeting participants with shared multi-site multi-windowing

The iD R600, equipped with the optional powerful display server, can be easily connected to the user's network infrastructure. Linking several of these iDs to the network brings multi-windowing to multi-site meetings, with the ability to perform real-time interaction and file sharing. By eliminating the need for travel and accelerating the decision making process, business will happen more efficient and productivity will increase, resulting in a higher return on investment.

Easily control your PC via the projector's mouse

Barco's Proximity Desktop allows to stream your desktop over LAN to the projection screen and fully control your PC from there.

- iD Pro R600 increases business efficiency in the corporate market.*
- virtual meetings save expensive travelling time
 - retrieve any file from the network
 - freely position and scale source windows



Large exhibition halls, auditoriums, entertainment floors, casinos and museums create a strong visual impact for their programs on show.



Tailor-made multi-screen solution



Choose for a lower cost, without sacrificing quality.

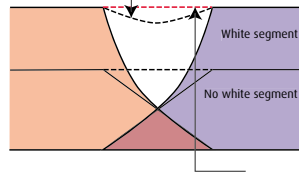
If your application specifically needs a multi-screen setup, Barco can offer you tailor-made solutions that are far more cost-competitive.



Multi-channel visualization without proper blending and color uniformity adjustment

Efficient seamless blending

Extra use of the white segment in the DLP™ color wheel improves brightness, but introduces white peaking in the overlap zones, making blends visible.



Barco's unique gamma compensation maintains excellent blending at high brightness levels. Optical Soft-Edge Blending is in no way influenced by white peaking.

Multi-screen color uniformity

Linked DYNACOLOR™ automatically aligns the projector to a common color triangle. This ensures that all projectors in the entire system have exactly the same primary and secondary color coordinates. The system auto-senses the addition of a new projector to a system and updates the common color triangle as required.



iD (Pro) R600 specifications

Light output

6,000 ANSI lumens in dual lamp mode
Brightness uniformity: > 95 % for the total screen

Display technology

1-chip 0.95" DarkChip3™ DLP™ SXGA+ panel, with a native resolution of 1400 x 1050 pixels, 4:3 aspect ratio

Lamp

2 x 250 Watt UHP lamp, in lamp housing, pre-aligned for max. light output.
Typical lifetime: 1,500 h/lamp.
1,500 hours in Dual Lamp Mode or 3,000 hours in Single Lamp Mode.

Contrast ratio

1,500 : 1 (full white/full black)

Available Lenses

Lens Type	Order No.
-----------	-----------

High Quality Zoom Lenses

QCLD (1.1-1.3:1)

CLD (1.2-1.6:1)

CLD (1.6-2.4:1)

CLD (2.4-4.3:1)

Fixed Focal Length Lens

QCLD (0.8:1)

Lens shift range

Max. vertical shift from -30% to +110%

Recommended Screen Width

From 1-6 m/3-20 ft.

Scan Frequencies

Horizontal 15 kHz - 110 kHz

Vertical 25 Hz - 150 Hz

Special Features

- AUTOIMAGE
- Advanced picture-in-picture
- Seamless switching with effects
- Standard cable basket

Communication

1x D9 connectors for RS232 In/Out

1x spherical IR receiver

Inputs

1x Configurable 5-Wire (BNC) for:
Composite Video, S-Video, Component Video, RGBHV, RGBS, RGsB.
1x Composite Video (BNC)
1x S-Video (4-pin mini-DIN)
1x VGA (D15 connector)
1x DVI (Digital Visual Interface)
1x SDI optional

Compatibility

The iD R600 is compatible with:

- All current video sources (PAL, SECAM, NTSC) in Composite, S-VHS, Component or RGB formats
- All currently proposed HDTV, extended and improved television standards (1080i, 720p)
- Most sources with a pixel clock up to 160 MHz
- All computer graphics formats from VGA, S-VGA, XGA, S-XGA and U-XGA (75 Hz)
- Most Macintosh computers
- Electronic workstations with a resolution up to 1600 x 1200 pixels/75 Hz
- DVI sources up to SXGA+

Max. power consumption

Barco iD R600: 650 Watt

Barco iD Pro R600: 680 Watt

AC Power

Power factor pre-regulated SMPS,
90-254 VAC / 50-60Hz

Safety Regulations

Compliant with UL1950 and EN60950

Electromagnetic Interference

BARCO's iD Series comply with FCC rules & regulations, part 15
Class B, CE EN55022 Class B and CCC

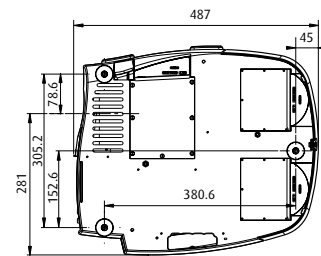
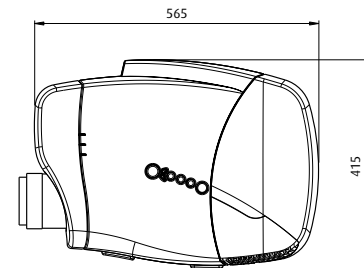
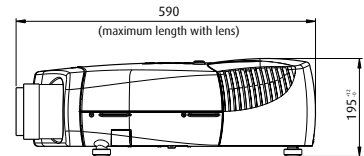
Weight

Net weight, body only: 12.9 kg/28.5 lbs.

Shipping weight:

- without lens max. 17.5 kg / 38.5 lbs.

- with lens max. 20 kg / 44 lbs.



Dimensions	mm	inch
Length ⁽¹⁾	590	23.23
Width	415	16.34
Height	195	7.68

(1) max. size including lens

Order information

iD R600 R9010340

iD Pro R600 * R9010350

(*) iD Pro R600 available Q3 2005

Ref. n°. R599981 March 2005



Barco Presentation is an ISO 9001 registered company.
The information and data given are typical for the equipment described. However any individual item is subject to change without any notice.
The latest version of this product sheet can be found on www.presentation.barco.com

DLP™ technology by Texas Instruments offers crystal clear images with superior quality.
DLP is a trademark of Texas Instruments.

BARCO

Visibly yours